



COVID-19 in Dutch Intensive Care Units;

Patient characteristics and outcomes

compared with pneumonia patients in the ICU from 2017-2019

Version 2021-11-17

This report has been made possible by the effort of all Dutch ICUs from:

| | |
|---|--|
| Admiraal De Ruyter Ziekenhuis | Martini Ziekenhuis |
| Albert Schweitzer Ziekenhuis | Meander Medisch Centrum |
| Alrijne Zorggroep | Medisch Centrum Leeuwarden |
| Amphia Ziekenhuis | Medisch Spectrum Twente |
| Amstelland | Máxima MC |
| Amsterdam UMC - locatie AMC | Nij Smellinghe |
| Amsterdam UMC - locatie VUmc | Noordwest Ziekenhuisgroep Locatie Alkmaar |
| Antonius Zorggroep | Noordwest Ziekenhuisgroep Locatie Den Helder |
| Beatrixziekenhuis Rivas Zorggroep | OLVG |
| Bernhoven | Ommelander Ziekenhuis Groningen |
| BovenIJ Ziekenhuis | Radboud UMC |
| Bravis Ziekenhuis | Reinier de Graaf Gasthuis |
| Canisius Wilhelmina Ziekenhuis | Rijnstate ziekenhuis |
| Catharina Ziekenhuis | Rivierenland |
| Deventer Ziekenhuis | Rode Kruis Ziekenhuis |
| Diakonessenhuis | Saxenburgh Groep |
| Dijklander ziekenhuis locatie Hoorn | Slingeland Ziekenhuis |
| Dijklander ziekenhuis locatie Purmerend | Spaarne Gasthuis locatie Haarlem |
| Elisabeth Ziekenhuis - TweeSteden | St. Anna Ziekenhuis |
| Elkerliek Ziekenhuis | St. Antonius Ziekenhuis |
| Erasmus Medisch Centrum | St. Jans-Gasthuis |
| Flevoziekenhuis | St. Jansdal |
| Franciscus Ziekenhuis Locatie Gasthuis | Streekziekenhuis Koningin Beatrix |
| Franciscus Ziekenhuis Locatie Vlietland | Tergooiziekenhuizen Locatie Blaricum |
| Gelderse Vallei | Tergooiziekenhuizen Locatie Hilversum |
| Gelre Ziekenhuis Locatie Apeldoorn | Tjongerschans |
| Gelre Ziekenhuis Locatie Zutphen | Treant Zorggroep |
| Haaglanden MC Locatie St Antoniushove | UMC Groningen |
| Haaglanden MC Locatie Westeinde | UMC Leiden |
| HagaZiekenhuis | UMC Maastricht |
| Het Groene Hart Ziekenhuis | UMC Utrecht |
| IJsselland Ziekenhuis | Van Weel Bethesda Ziekenhuis |
| Ikazia Ziekenhuis | VieCuri Medisch Centrum |
| Isala | Wilhelmina Ziekenhuis |
| Jeroen Bosch Ziekenhuis | Zaans Medisch Centrum |
| LangeLand Ziekenhuis | Ziekenhuisgroep Twente |
| Laurentius Ziekenhuis | ZorgSaam Zeeuws-Vlaanderen |
| Maasstad Ziekenhuis | Zuyderland Locatie Heerlen |
| Maasziekenhuis Pantein | Zuyderland Locatie Sittard Geleen |

Introduction

Despite the increased workload in patient care, all hospitals have put great effort in registering the data concerning COVID-19 patients. By using the online data entry system of the National Intensive Care Evaluation (NICE) foundation a limited amount of data (e.g. admission and discharge date and the age of the patient) on all COVID-19 patients has been recorded. By linking this data to more extensive clinical data, which are being collected regular by the NICE registration, it becomes possible to provide more clarity about the important characteristics and outcomes of COVID-19 patients. Because these extensive clinical data are subsequently supplied in batches from the electronic health record (EHR), these are not yet available for every COVID-19 patient. This means, when reading this report, make sure the results concern an overview of all COVID-19 patients or of COVID-19 patients who are linked to the extensive clinical data.

From February 25, 2021, all individual episodes of patients who have had multiple proven COVID-19 episodes will be included. An episode is defined as a consecutive hospital admission period (in one or more hospitals) in which a patient has tested positive at any time. Once a patient is discharged from hospital and after more than three days is re-admitted to hospital with proven COVID-19, this new hospitalization will be considered as a new COVID-19 episode. This allows one patient to have multiple COVID-19 episodes. This report uses data from all recorded episodes.

This report will be updated frequently in order to include more COVID-19 patients and more clinical data in the analyses. When only a limited amount of episodes can be linked this could lead to bias: a distortion of the results can occur if the linked episodes differ from the non-linked episodes, for instance because the patients of linked episodes have been discharged relatively quickly, or because they died. If more data are available, there will be more certainty about the shown differences between time periods and the associations between patient characteristics and their outcomes.

The data included in this report has been processed by the compilers with the utmost care. The compiler cannot be held liable in any way for information that is nevertheless incomplete or incorrect.

In the table below the total number of admitted COVID-19 episodes, the COVID-19 episodes linked to the clinical data, and SARI patients are shown.

| | Number of patients | Number of hospitals |
|----------------------------|---------------------------|----------------------------|
| All COVID-19 episodes | 14671 | 72 |
| Linked COVID-19 episodes | 13134 | 72 |
| SARI patients in 2017-2019 | 19851 | 80 |

Comparison COVID-19 with SARI

In this report, the data of the COVID-19 episodes will be compared with a group of patients who was admitted to a Dutch ICU with severe pneumonia between the period of 1 January 2017 till 31 December 2019. This group is being called Severe Acute Respiratory Infection (SARI). In this report, SARIs will be defined based on the following (APACHE IV) reasons of admission: Pulmonary sepsis; Viral pneumonia; Aspiration pneumonia; Bacterial pneumonia; Fungal pneumonia; Parasitic pneumonia (i.e. Pneumocystis pneumonia); Other pneumonia.

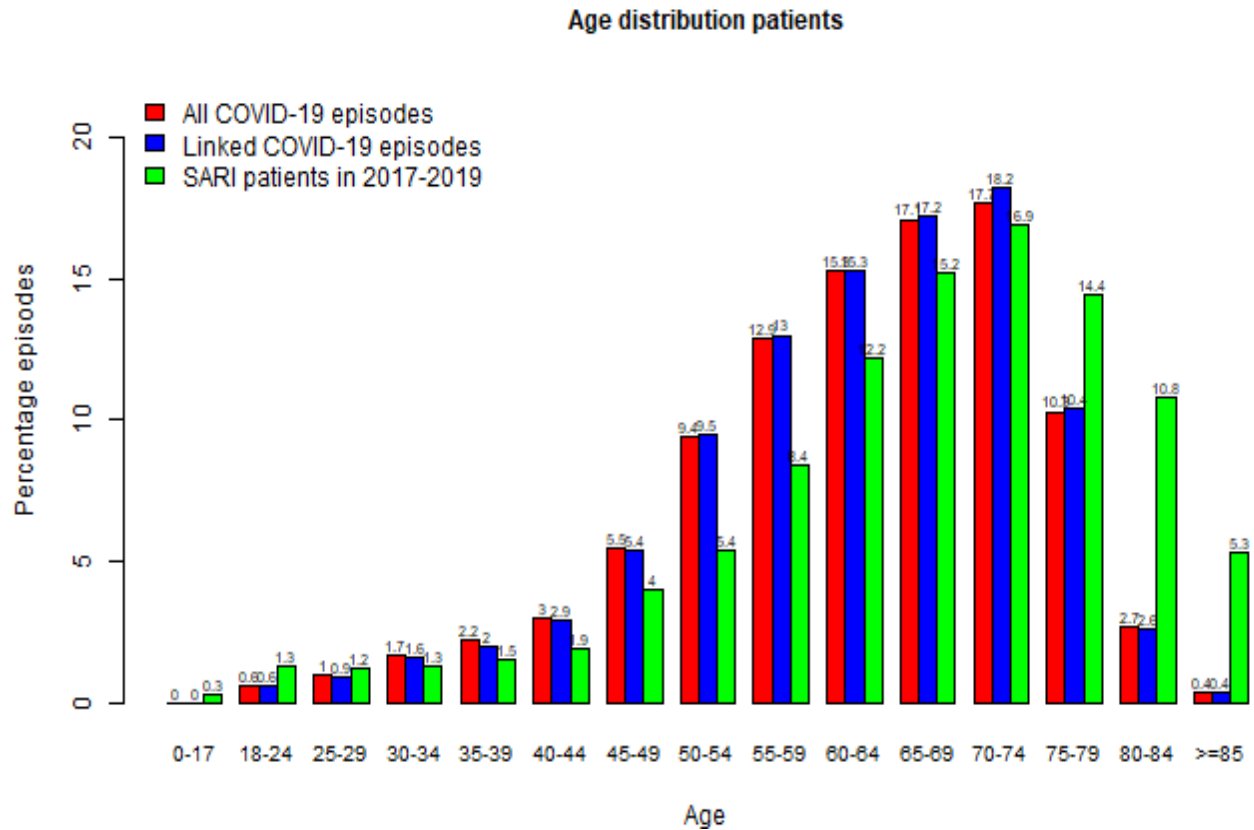
ICU length of stay

The table below shows the mean ICU length of stay of all COVID-19 episodes and admitted SARI patients, of the COVID-19 episodes of which the patients are still in the ICU, and of COVID-19 episodes and SARI patients who have been discharged recently split up into different discharge destinations. If a COVID-19 patient has been transferred to another ICU during the episode, all ICU length of stays will be added up together. The length of stay is calculated in days ((discharge date - admission date)+1).

| | Number of COVID-19 episodes | Mean length of stay (SD) | Number of SARI patients | Mean length of stay (SD) |
|--|------------------------------------|---------------------------------|--------------------------------|---------------------------------|
| Patients who are currently being treated in the ICU * | 368 | 13.8 (14.5) | 0 | - |
| Discharged to nursing ward in same or different hospital | 10295 | 16.5 (18.2) | 14111 | 5.9 (9.6) |
| Other discharge destination | 486 | 19.3 (24.9) | 2296 | 7.2 (11.2) |
| Died in the ICU | 3522 | 18.2 (17.1) | 3444 | 7.1 (10.5) |
| TOTAL | 14671 | 16.9 (18.1) | 19851 | 6.3 (10.0) |

**N.B. For the COVID-19 episodes of which the patient is currently admitted, it concerns the ICU length of stay up till the moment that this report was generated and not the final total length of stay.*

The figure and table below show the age distribution of all COVID-19 episodes, the linked COVID-19 episodes and the SARI patients.

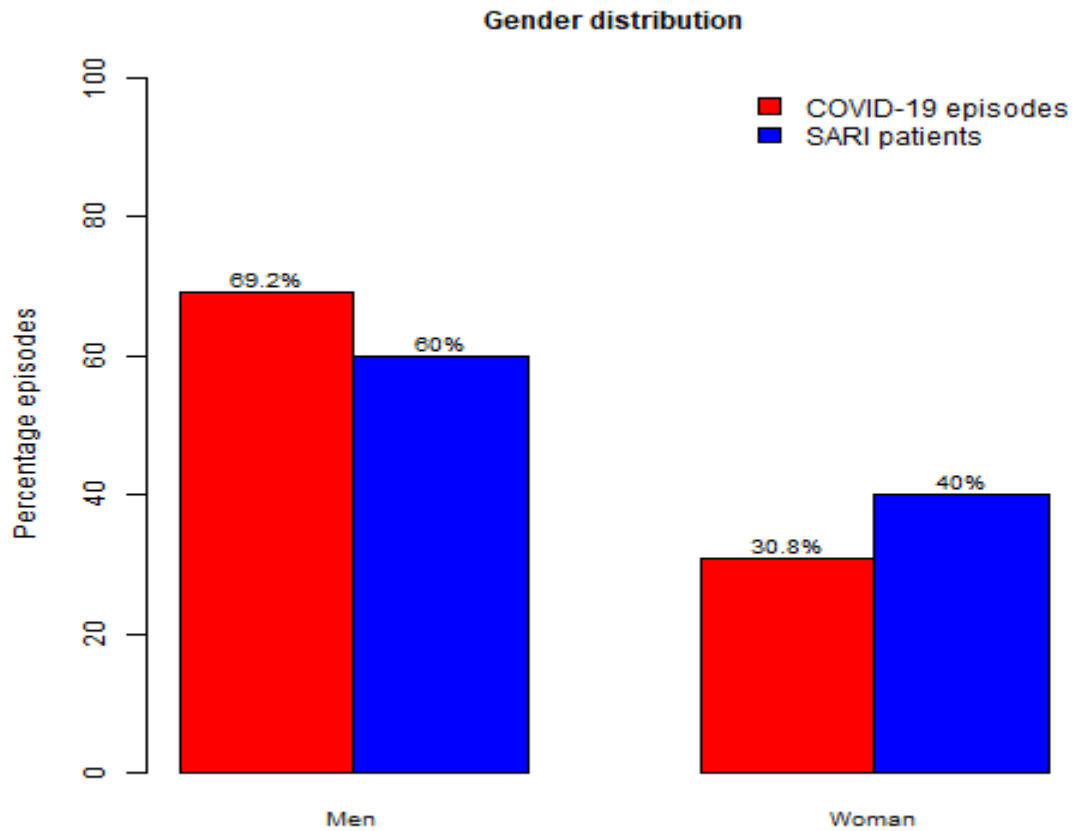


| | Mean age (SD) |
|----------------------------|----------------------|
| All COVID-19 episodes | 62.2 (12.2) |
| Linked COVID-19 episodes | 62.4 (11.9) |
| SARI patients in 2017-2019 | 66.3 (14.2) |

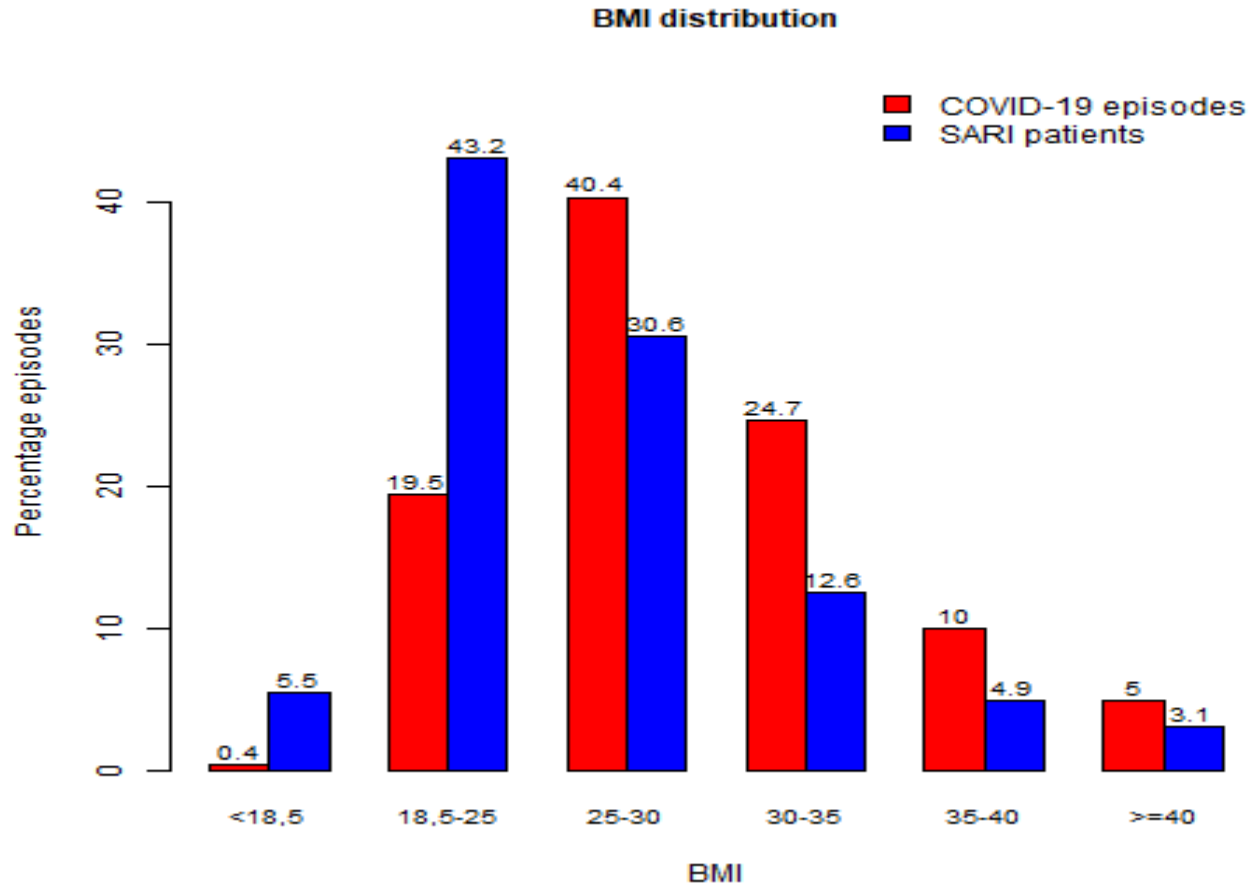
Patient characteristics

In the remainder of this report, the extensive data from the NICE registration will be used. Therefore, from here on, only the linked COVID-19 episodes will be included. This group will continuously be compared with the SARI patients who have been admitted to the ICU in the previous three years (2017-2019).

In the figure below the distribution of men and women in the linked COVID-19 episodes and the SARI patients is shown.



In the graph below, the BMI-distribution of the linked COVID-19 episodes and the SARI patients is shown.

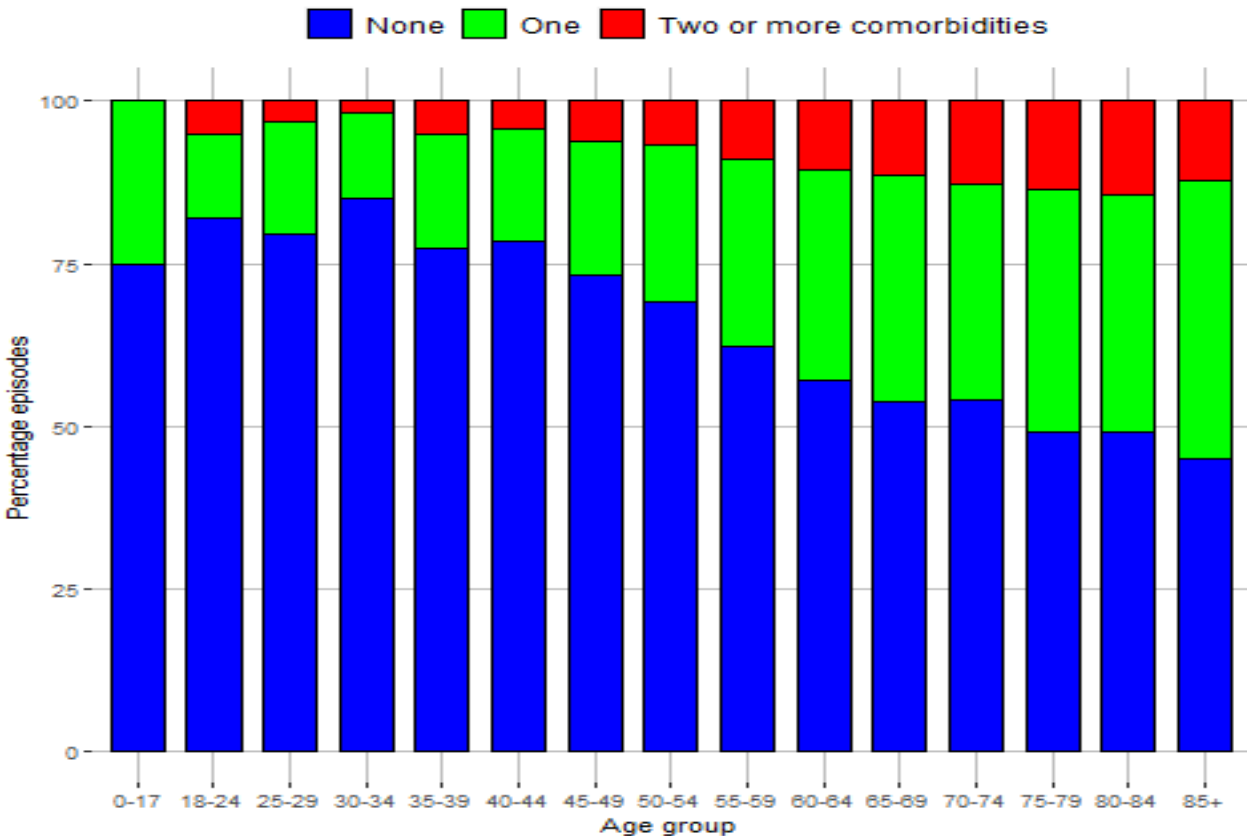


| | Mean BMI (SD) |
|----------------------------|----------------------|
| Linked COVID-19 episodes | 29.6 (5.6) |
| SARI patients in 2017-2019 | 26.2 (6.0) |

The table below shows for several different comorbidities (secondary diagnoses) the number and percentage of episodes of which the patient had the concerning comorbidity. Additionally, this table shows the number and percentage of episodes of which the patient were mechanically ventilated at ICU admission, and that were mechanically ventilated within the first 24 hours of ICU admission.

| | COVID-19 episodes N(%) | SARI patients N(%) |
|---|-----------------------------------|-------------------------------|
| COPD/Respiratory insufficiency | 1648 (12.5) | 7554 (38.1) |
| Renal failure | 537 (4.1) | 1725 (8.7) |
| Cirrhosis | 53 (0.4) | 238 (1.2) |
| Cardiovascular insufficiency | 204 (1.6) | 764 (3.8) |
| Malignancy/Haematological insufficiency | 339 (2.6) | 1962 (9.9) |
| Immunological insufficiency | 1202 (9.2) | 3815 (19.2) |
| Diabetes | 2962 (22.6) | 4009 (20.2) |
| Mechanically ventilated at ICU admission | 3892 (29.6) | 7953 (40.1) |
| Mechanically ventilated within the 1st 24 hours | 8164 (62.2) | 11164 (56.2) |

In the graph below, the percentage of COVID-19 episodes of which the patient had no, one or more than one comorbidities are given for different age groups.



*Note since the report of 2020-12-10 diabetes is also counted as a comorbidity, as a result of this the percentage of episodes of which patient had one or more comorbidities may have increased compared to previous reports.

Patient outcomes and determinants

In the table below important characteristics belonging to COVID-19 episodes of which the patient died are compared with COVID-19 episodes of which the patient survived.

N.B. This analysis excludes the episodes of which the patient is still admitted at the Intensive Care. However, the number of these episodes are being shown in the last column of the table. The listed percentages should be read horizontally.

Per patient characteristic, the number and percentage of episodes of which the patient deceased and survived has been displayed. The column containing the P-value shows whether the differences between the episodes of deceased and survived patients are statistically significant. A P-value smaller than 0.05 shows that the presented differences are statistically significant (cannot be explained based on coincidence). A P-value of 0.05 or bigger means that the discovered differences are probably a coincidence.

Finally, the association between the patient characteristic and mortality is shown with Odds Ratio's (OR). An OR shows approximately how much the risk of dying is increased in relation to the comparison category, also known as the reference population. Regarding age: due to the small numbers, the seven youngest age categories have been combined into one reference population. Therefore, in the remaining age categories the OR indicate how much more the risk of dying is increased in comparison to this reference population. The 95%-confidence interval (CI) of the OR is displayed in the second last column and indicates whether the association found between the patient characteristics and mortality is statistically significant (confidence interval does NOT include 1) or not significant (confidence interval DOES include 1).

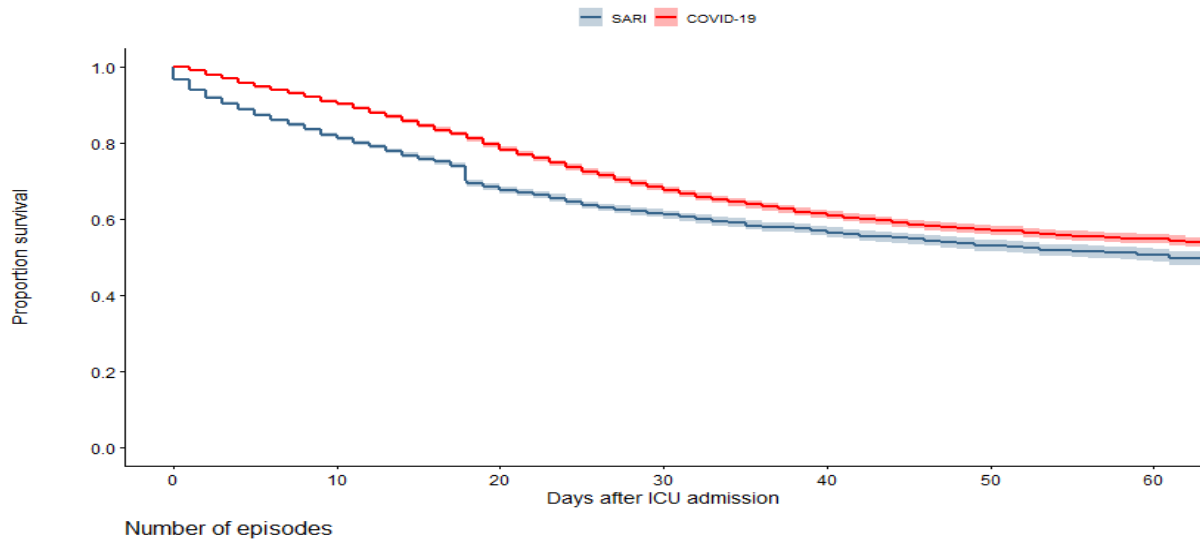
| | COVID-19 survivors N (%) | COVID-19 deceased N (%) | P-value | Odds ratio (95% CI) | COVID-19 still in hospital N |
|--------------|-----------------------------|----------------------------|---------|------------------------|---------------------------------|
| All episodes | 9123 (71.6) | 3616 (28.4) | | | 395 |
| Age groups | | | <0.001 | | |
| 0-17 | 2 (66.7) | 1 (33.3) | | reference | 1 |
| 18-24 | 73 (98.6) | 1 (1.4) | | reference | 4 |
| 25-29 | 111 (94.1) | 7 (5.9) | | reference | 4 |
| 30-34 | 195 (96.5) | 7 (3.5) | | reference | 7 |
| 35-39 | 231 (93.1) | 17 (6.9) | | reference | 8 |
| 40-45 | 337 (92.6) | 27 (7.4) | | reference | 13 |
| 45-50 | 638 (91.1) | 62 (8.9) | | reference | 9 |
| 50-55 | 1052 (87.6) | 149 (12.4) | | 1.82 (1.42-2.34) | 50 |
| 55-60 | 1407 (85.1) | 247 (14.9) | | 2.26 (1.8-2.84) | 50 |
| 60-65 | 1508 (77.2) | 446 (22.8) | | 3.81 (3.08-4.7) | 53 |
| 65-70 | 1464 (67.4) | 709 (32.6) | | 6.23 (5.09-7.64) | 53 |
| 70-75 | 1317 (56.6) | 1010 (43.4) | | 9.87 (8.08-12.06) | 79 |
| 75-80 | 632 (47.8) | 690 (52.2) | | 14.05 (11.37-17.37) | 79 |
| 80-85 | 132 (38.8) | 208 (61.2) | | 20.28 (15.26-26.96) | 79 |
| >85 | 15 (31.2) | 33 (68.8) | | 28.32 (14.97-53.55) | 79 |
| Gender | | | <0.001 | | |
| Men | 6152 (69.8) | 2660 (30.2) | | reference | 276 |
| Woman | 2971 (75.7) | 956 (24.3) | | 0.74 (0.68-0.81) | 119 |

| | COVID-19 survivors N (%) | COVID-19 deceased N (%) | P-value | Odds ratio (95% CI) | COVID-19 still in hospital N |
|--|-------------------------------------|------------------------------------|----------------|--------------------------------|---|
| BMI groups | | | <0.001 | | |
| <18.5 | 32 (61.5) | 20 (38.5) | | 1.25 (0.71-2.2) | 2 |
| 18.5-25 | 1613 (66.8) | 803 (33.2) | | reference | 84 |
| 25-30 | 3571 (70.9) | 1466 (29.1) | | 0.82 (0.74-0.91) | 144 |
| 30-35 | 2274 (74.3) | 785 (25.7) | | 0.69 (0.62-0.77) | 105 |
| 35-40 | 947 (75.8) | 302 (24.2) | | 0.64 (0.55-0.74) | 35 |
| >40 | 486 (77.9) | 138 (22.1) | | 0.57 (0.46-0.7) | 18 |
| Comorbidities | | | | | |
| COPD & respiratory insufficiency No | 8147 (73.1) | 3004 (26.9) | <0.001 | reference | 335 |
| COPD & respiratory insufficiency Yes | 976 (61.5) | 612 (38.5) | | 1.7 (1.52-1.9) | 60 |
| Renal failure No | 8904 (72.8) | 3326 (27.2) | <0.001 | reference | 367 |
| Renal failure Yes | 219 (43) | 290 (57) | | 3.55 (2.96-4.24) | 28 |
| Cardiovascular insufficiency No | 9032 (72) | 3514 (28) | <0.001 | reference | 384 |
| Cardiovascular insufficiency Yes | 91 (47.2) | 102 (52.8) | | 2.88 (2.17-3.83) | 11 |
| Malignancy No | 8970 (72.3) | 3443 (27.7) | <0.001 | reference | 382 |
| Malignancy Yes | 153 (46.9) | 173 (53.1) | | 2.95 (2.36-3.67) | 13 |
| Immunological insufficiency No | 8466 (73.1) | 3117 (26.9) | <0.001 | reference | 349 |
| Immunological insufficiency Yes | 657 (56.8) | 499 (43.2) | | 2.06 (1.82-2.33) | 46 |
| Number of comorbidities | | | <0.001 | | |
| None | 5870 (77.4) | 1711 (22.6) | | reference | 214 |
| 1 | 2621 (67.6) | 1256 (32.4) | | 1.63 (1.5-1.78) | 121 |
| >1 | 632 (49.3) | 649 (50.7) | | 3.44 (3.04-3.89) | 60 |
| Diagnoses at ICU-admission | | | | | |
| Cardiopulmonary resuscitation No | 9076 (72.1) | 3513 (27.9) | <0.001 | reference | 391 |
| Cardiopulmonary resuscitation Yes | 47 (31.3) | 103 (68.7) | | 5.66 (4.00-8.01) | 4 |
| Mechanical ventilation at admission No | 6649 (74.3) | 2302 (25.7) | <0.001 | reference | 291 |
| Mechanical ventilation at admission Yes | 2474 (65.3) | 1314 (34.7) | | 1.53 (1.41-1.67) | 104 |
| Gastrointestinal bleeding No | 9105 (71.6) | 3604 (28.4) | 0.212 | reference | 394 |
| Gastrointestinal bleeding Yes | 18 (60) | 12 (40) | | 1.68 (0.81-3.5) | 1 |
| Diabetes No | 7261 (73.6) | 2607 (26.4) | <0.001 | reference | 304 |
| Diabetes Yes | 1862 (64.9) | 1009 (35.1) | | 1.51 (1.38-1.65) | 91 |
| Diagnoses in 1st 24 hours of ICU-admission | | | | | |
| Acute renal failure No | 8735 (73.6) | 3141 (26.4) | <0.001 | reference | 367 |
| Acute renal failure Yes | 388 (45) | 475 (55) | | 3.4 (2.96-3.92) | 28 |
| Mechanical ventilation within the 1st 24 hours No | 3750 (78.1) | 1053 (21.9) | <0.001 | reference | 167 |
| Mechanical ventilation within the 1st 24 hours Yes | 5373 (67.7) | 2563 (32.3) | | 1.7 (1.56-1.85) | 228 |
| Confirmed infection No | 1786 (71.9) | 699 (28.1) | 0.771 | reference | 101 |
| Confirmed infection Yes | 7337 (71.6) | 2917 (28.4) | | 1.02 (0.92-1.12) | 294 |
| Vasoactive medication No | 4874 (77.4) | 1426 (22.6) | <0.001 | reference | 205 |
| Vasoactive medication Yes | 4249 (66) | 2190 (34) | | 1.76 (1.63-1.91) | 190 |

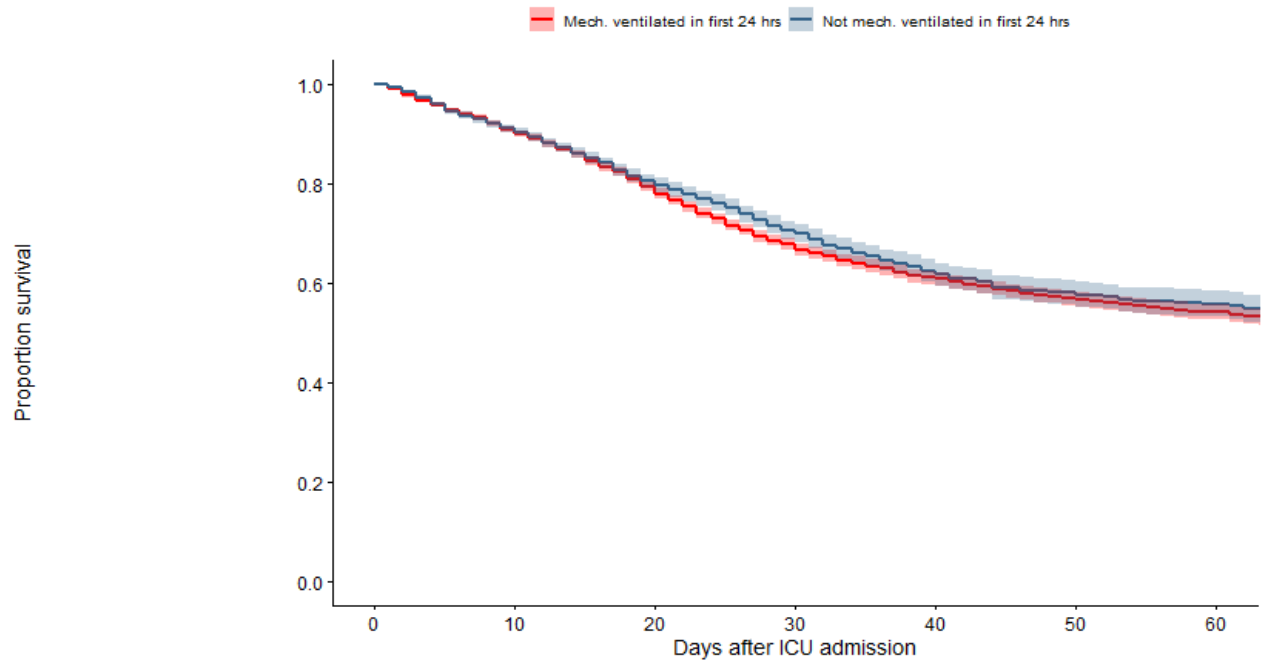
Kaplan Meier survival curve

In the figure below, one can see a first estimate of the percentage of COVID-19 episodes (the vertical axis) of which patients survived the hospitalisation, including a period in ICU, since the day of ICU admission until a certain moment in time (the horizontal axis). In the first figure a distinction has been made between all COVID-19 episodes (black line), the linked COVID-19 episodes (the red line) and the SARI patients from the years 2017-2019 (blue line). The second figure shows the linked COVID-19 episodes of which the patient has (dotted) or has not (solid) been mechanically ventilated at the first day of admission.

These estimations have to be interpreted with care, because the episodes of which the patient is currently being treated have been included in these analyses too and consequently their outcome is not yet known. Therefore, based on this figure we cannot conclude that COVID-19 patients have a better prognosis compared to the SARIs. The current group of COVID-19 episodes and the previous SARI patients possibly differ regarding important clinical characteristics such as age and secondary diseases such as diabetes or COPD. Further research could prove whether the survival chance differs between the COVID-19 and SARI population.



| | 0 | 10 | 20 | 30 | 40 | 50 | 60 |
|----------|-------|-------|------|------|------|------|------|
| SARI | 19851 | 9932 | 4016 | 2011 | 1165 | 694 | 442 |
| COVID-19 | 14671 | 11561 | 6702 | 4035 | 2619 | 1772 | 1189 |



Aantal episoden at risk

| | | | | | | | |
|--------------------------------------|------|------|------|------|------|------|-----|
| Mech. ventilated in first 24 hrs | 8164 | 7088 | 4588 | 2827 | 1847 | 1217 | 785 |
| Not mech. ventilated in first 24 hrs | 4970 | 3457 | 1643 | 946 | 619 | 446 | 320 |

Variations over time

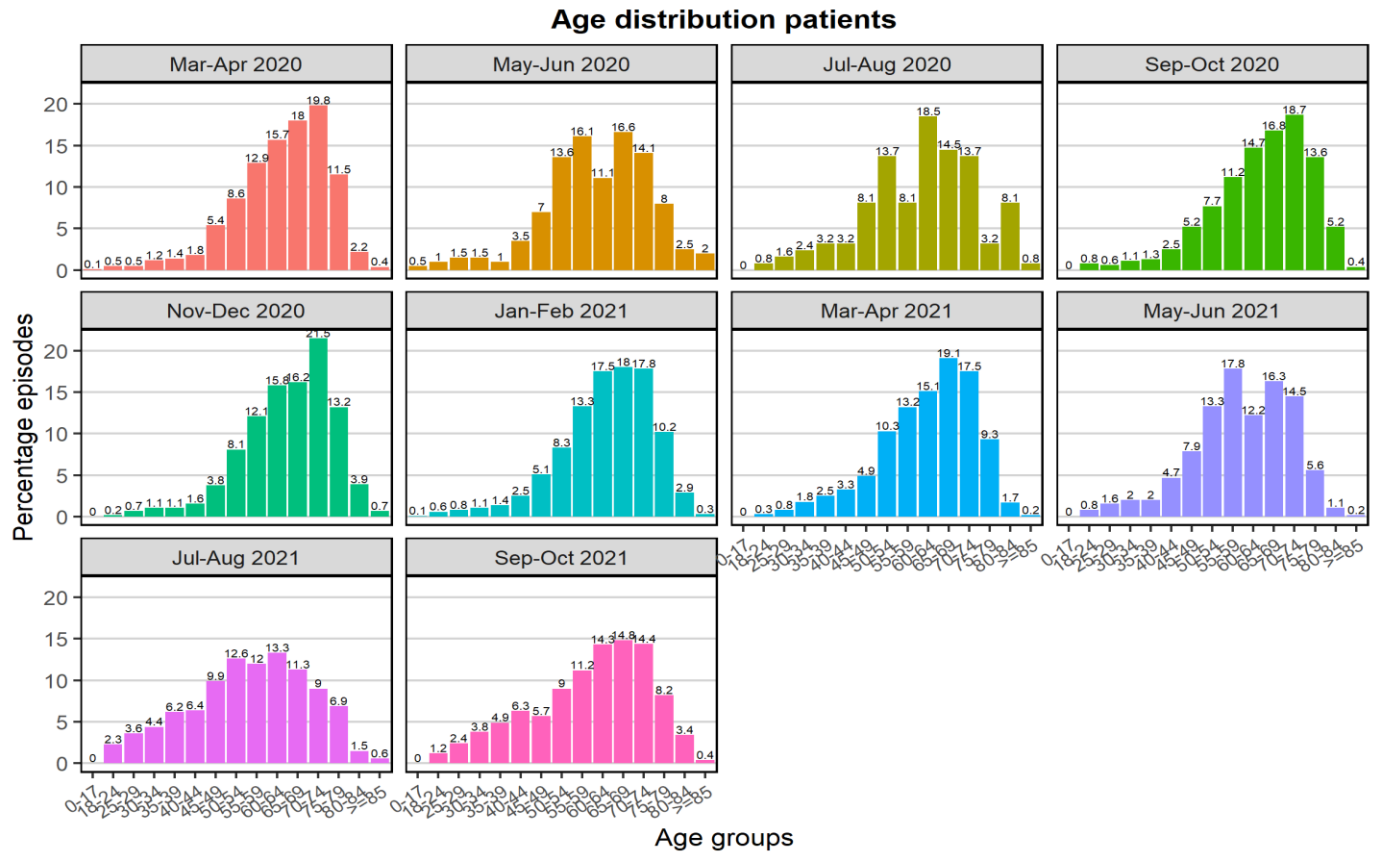
COVID-19 is a new clinical condition for which new knowledge is continuously being obtained, new treatment methods are used and as a result the prognoses / outcomes of the patients may change. To provide insight into these changes, the section below of the report will break down some important patient characteristics and outcomes into two-month periods of the COVID-19 epidemic.

The table below shows the number of COVID-19 episodes per two months.

| | Number of episodes | Number of episodes of which the patient is deceased (%) * | Number of episodes linked to clinical data (%) |
|-------------------|---------------------------|--|---|
| March-April 2020 | 2669 | 820 (30.7) | 2601 (97.5) |
| Mei-June 2020 | 199 | 37 (18.6) | 190 (95.5) |
| July-August 2020 | 124 | 30 (24.2) | 118 (95.2) |
| Sept-Oct 2020 | 1422 | 468 (32.9) | 1363 (95.9) |
| November-Dec 2020 | 2203 | 719 (32.6) | 2092 (95.0) |
| Jan-Feb 2021 | 2020 | 563 (27.9) | 1968 (97.4) |
| March-April 2021 | 2983 | 751 (25.2) | 2855 (95.7) |
| Mei-June 2021 | 1122 | 226 (20.1) | 1043 (93.0) |
| July-August 2021 | 724 | 140 (19.3) | 543 (75.0) |
| Sept-Oct 2021 | 743 | 172 (23.1) | 328 (44.1) |

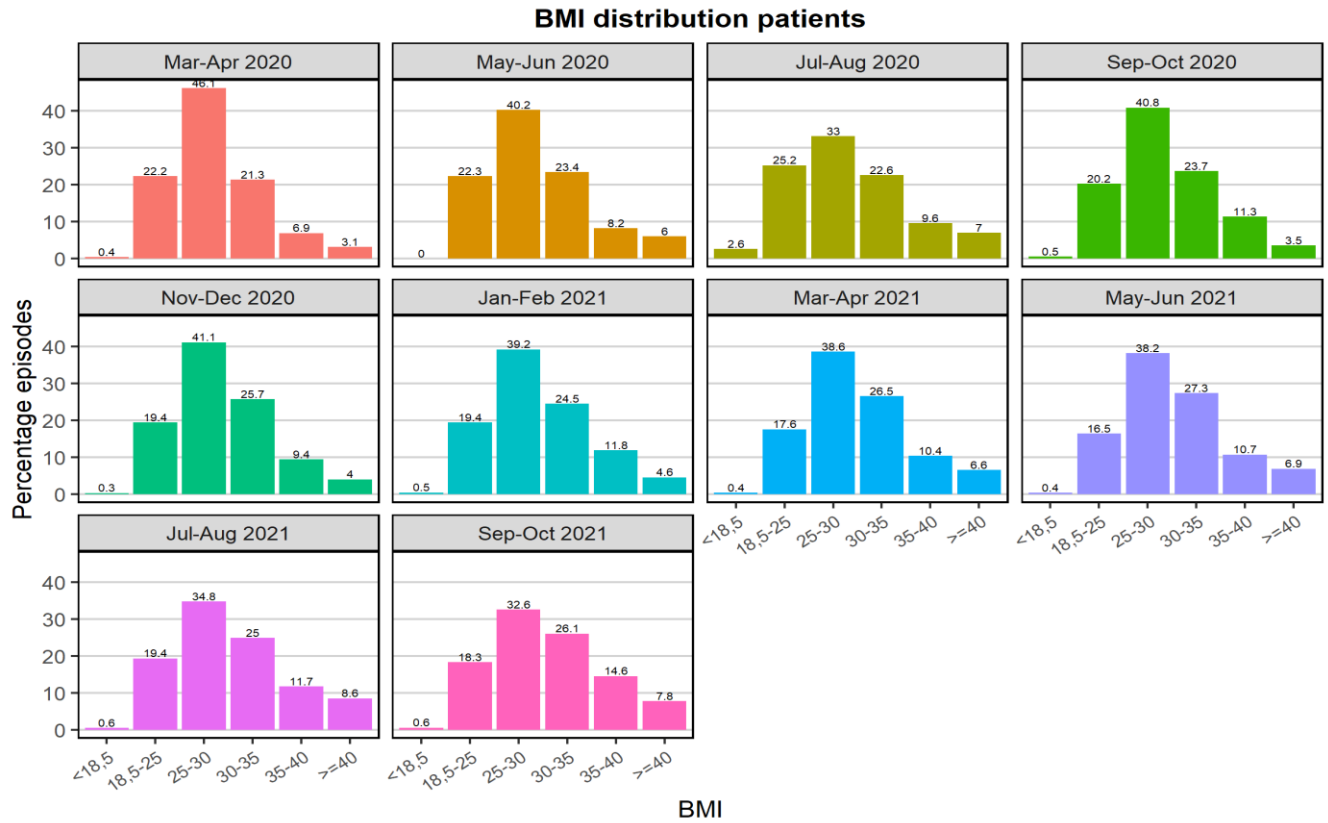
** Note a large proportion of patients of the episodes from the more recent periods are still hospitalized of which a part may still die, so the numbers can still rise (considerably).*

The figure and table below shows the age distribution of the patients from all COVID-19 episodes over different time periods.



| | Mean age (SD) | Median Age (IQR) |
|------------------|----------------------|-------------------------|
| March-April 2020 | 63.4 (11.2) | 65 (57-72) |
| May-June 2020 | 60.8 (13.1) | 61 (53-70) |
| July-August 2020 | 60.3 (13.3) | 64 (51-70) |
| Sept-Oct 2020 | 64.2 (11.9) | 66 (57-73) |
| Nov-Dec 2020 | 64.7 (11.1) | 66 (58-73) |
| Jan-Feb 2021 | 62.8 (11.5) | 64 (57-71) |
| March-April 2021 | 61.9 (11.7) | 64 (55-71) |
| May-June 2021 | 59.1 (12.0) | 59 (52-69) |
| July-August 2021 | 55.1 (14.6) | 56 (46-66) |
| Sept-Oct 2021 | 59.0 (14.4) | 61 (50-70) |

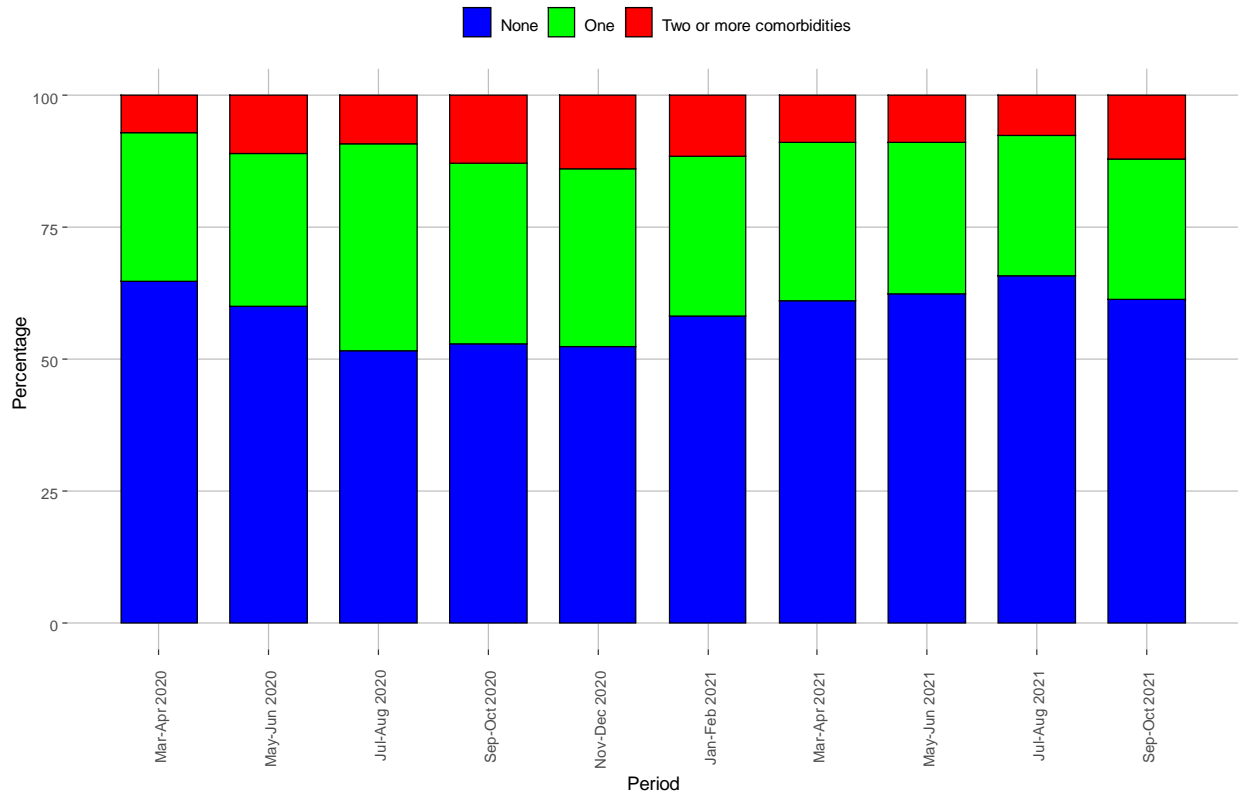
The figure and table below shows the BMI distribution of the patients of all COVID-19 episodes over different time periods.



| | Mean BMI (SD) | Median BMI (IQR) |
|------------------|----------------------|-------------------------|
| March-April 2020 | 28.7 (4.9) | 27.8 (25.3-31.1) |
| May-June 2020 | 29.4 (5.7) | 28.4 (25.3-32.2) |
| July-August 2020 | 29.4 (6.6) | 28.0 (24.7-32.9) |
| Sept-Oct 2020 | 29.3 (5.3) | 28.7 (25.6-32.0) |
| Nov-Dec 2020 | 29.4 (5.3) | 28.4 (25.7-32.4) |
| Jan-Feb 2021 | 29.7 (5.6) | 28.7 (25.8-32.8) |
| March-April 2021 | 30.1 (5.9) | 29.1 (26.0-32.9) |
| May-June 2021 | 30.3 (6.0) | 29.4 (26.1-33.3) |
| July-August 2021 | 30.3 (6.4) | 29.3 (25.9-33.8) |
| Sept-Oct 2021 | 30.7 (6.8) | 29.7 (26.3-34.0) |

In the graph below, the percentage episodes of which the patients had no, one or more than one comorbidities are given for different periods.

**Note since the report of 2020-12-10 diabetes is also counted as a comorbidity, as a result of this the percentage episodes of which patients had no, one or more than one comorbidities may have increased compared to previous reports.*



The table below shows per two months period the mean ICU length of stay of all COVID-19 episodes, of the COVID-19 episodes of which the patient is still in the ICU, and of COVID-19 episodes of which the patient has been discharged recently split up into different discharge destinations. If a patient has been transferred to another ICU during an episode, all ICU length of stays will be added up together. The length of stay is calculated in days ((discharge date - admission date)+1). Note that the most recent period still yields many uncertain results because a large part of this population is still included, so the averages shown will most likely increase.

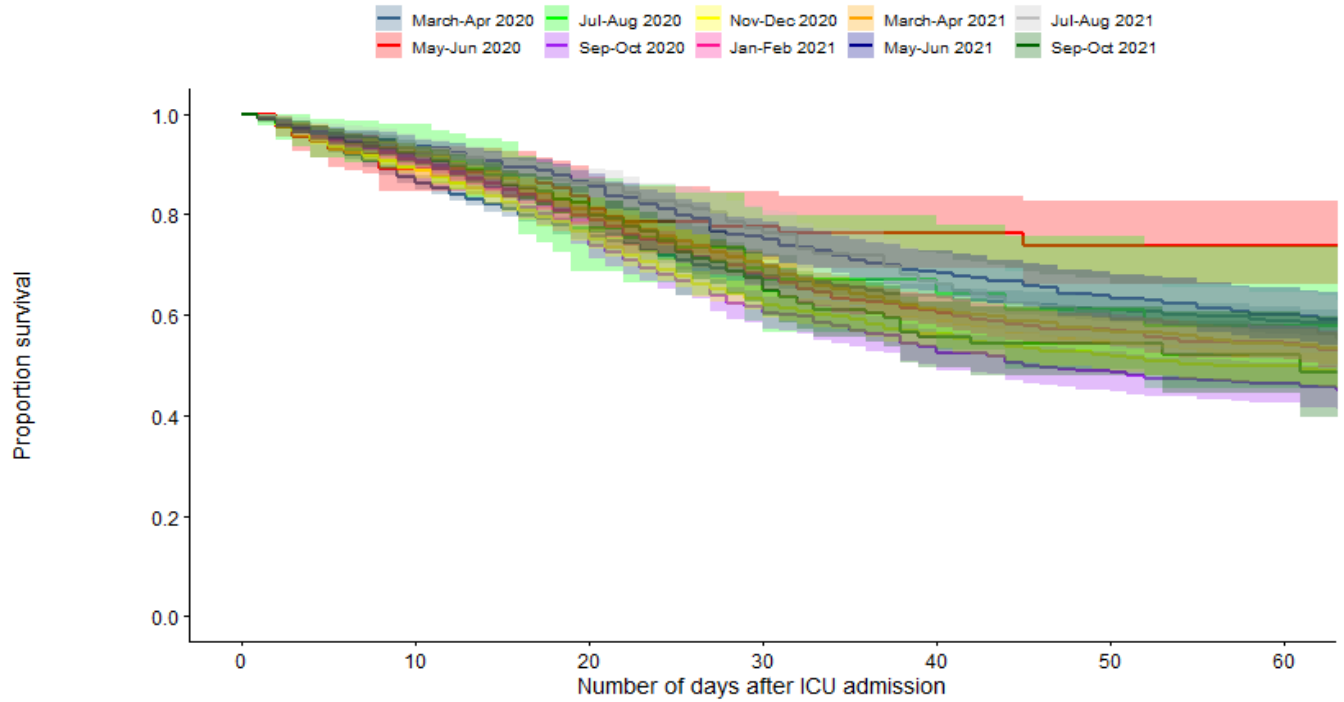
| | Number of episodes | Mean length of ICU stay (SD) |
|--|---------------------------|-------------------------------------|
| Period March-April 2020 | | |
| Patients who are currently being treated in the ICU * | 0 | - |
| Discharged to nursing ward in same or different hospital | 1817 | 22 (17.4) |
| Other discharge destination | 103 | 26.4 (33) |
| Died in the ICU | 749 | 15.9 (18.4) |
| TOTAL | 2669 | 20.4 (18.8) |
| Period May-June 2020 | | |
| Patients who are currently being treated in the ICU * | 0 | - |
| Discharged to nursing ward in same or different hospital | 159 | 15.7 (14.9) |
| Other discharge destination | 10 | 19.8 (32.4) |
| Died in the ICU | 30 | 13.4 (10.4) |
| TOTAL | 199 | 15.5 (15.5) |
| Period July-August 2020 | | |
| Patients who are currently being treated in the ICU * | 0 | - |
| Discharged to nursing ward in same or different hospital | 95 | 13.5 (15.8) |
| Other discharge destination | 7 | 22.7 (21.9) |
| Died in the ICU | 22 | 16.6 (16.6) |
| TOTAL | 124 | 14.6 (16.3) |
| Period Sept-Oct 2020 | | |
| Patients who are currently being treated in the ICU * | 0 | - |
| Discharged to nursing ward in same or different hospital | 982 | 15.7 (17.6) |
| Other discharge destination | 34 | 16.3 (19.0) |
| Died in the ICU | 406 | 19.6 (14.0) |
| TOTAL | 1422 | 16.8 (16.8) |
| Period Nov-Dec 2020 | | |
| Patients who are currently being treated in the ICU * | 0 | - |
| Discharged to nursing ward in same or different hospital | 1514 | 16.7 (18.1) |
| Other discharge destination | 63 | 16.4 (17.7) |
| Died in the ICU | 626 | 18.1 (14.4) |
| TOTAL | 2203 | 17.1 (17.1) |
| Period Jan-Feb 2021 | | |
| Patients who are currently being treated in the ICU * | 0 | - |
| Discharged to nursing ward in same or different hospital | 1483 | 15.9 (16.6) |
| Other discharge destination | 39 | 18.0 (21.0) |
| Died in the ICU | 498 | 18.6 (15.2) |
| TOTAL | 2020 | 16.6 (16.4) |

| | Number of episodes | Mean length of ICU stay (SD) |
|--|---------------------------|-------------------------------------|
| Period March-April 2021 | | |
| Patients who are currently being treated in the ICU * | 0 | - |
| Discharged to nursing ward in same or different hospital | 2215 | 15.1 (16.1) |
| Other discharge destination | 98 | 19.4 (27.2) |
| Died in the ICU | 670 | 19.5 (14.3) |
| TOTAL | 2983 | 16.2 (16.3) |
| Period May-June 2021 | | |
| Patients who are currently being treated in the ICU * | 1 | 187 (NA) |
| Discharged to nursing ward in same or different hospital | 872 | 14.9 (17.1) |
| Other discharge destination | 49 | 21.3 (24.5) |
| Died in the ICU | 200 | 19.4 (14.7) |
| TOTAL | 1122 | 16.2 (17.9) |
| Period July-August 2021 | | |
| Patients who are currently being treated in the ICU * | 2 | 96.5 (16.3) |
| Discharged to nursing ward in same or different hospital | 555 | 13.6 (14.2) |
| Other discharge destination | 39 | 18.2 (18.5) |
| Died in the ICU | 128 | 20.2 (14.3) |
| TOTAL | 724 | 15.2 (15.3) |
| Period Sept-Oct 2021 | | |
| Patients who are currently being treated in the ICU * | 83 | 26.9 (9) |
| Discharged to nursing ward in same or different hospital | 477 | 10.9 (9.1) |
| Other discharge destination | 33 | 9.4 (10.7) |
| Died in the ICU | 150 | 16.5 (10.2) |
| TOTAL | 743 | 13.8 (10.7) |

**N.B. For the COVID-19 episodes of which the patient is currently admitted, it concerns the ICU length of stay up till the moment that this report was generated and not the final total length of stay.*

The figure below shows an initial estimate per period of the percentage of COVID-19 episodes (the vertical axis) of which the patient survived hospitalization, including admission to the ICU, until a certain moment (the horizontal axis) after the start of the ICU admission.

These estimates must be interpreted with caution, because the patients who are currently being treated have also been included and the outcome of them is therefore not yet known.



| | Number of episodes at risk | | | | | | |
|----------------|----------------------------|------|------|-----|-----|-----|-----|
| | 0 | 10 | 20 | 30 | 40 | 50 | 60 |
| March-Apr 2020 | 2669 | 2185 | 1495 | 959 | 628 | 395 | 240 |
| May-Jun 2020 | 199 | 147 | 100 | 66 | 41 | 28 | 19 |
| Jul-Aug 2020 | 124 | 95 | 44 | 33 | 24 | 18 | 13 |
| Sep-Oct 2020 | 1422 | 1161 | 649 | 365 | 250 | 179 | 121 |
| Nov-Dec 2020 | 2203 | 1738 | 1026 | 614 | 422 | 294 | 200 |
| Jan-Feb 2021 | 2020 | 1606 | 940 | 566 | 379 | 255 | 178 |
| March-Apr 2021 | 2983 | 2401 | 1315 | 794 | 507 | 341 | 229 |
| May-Jun 2021 | 1122 | 896 | 494 | 308 | 197 | 147 | 106 |
| Jul-Aug 2021 | 724 | 560 | 297 | 184 | 112 | 79 | 55 |
| Sep-Oct 2021 | 743 | 589 | 329 | 133 | 48 | 25 | 17 |

The table below shows the (univariate) Odds Ratio (OR) of the two monthly periods. An OR shows approximately how much the risk of dying is increased in relation to the reference group, i.e. the months March and April. The 95% confidence interval of the OR indicates whether the relationship found between the period and mortality is significant (confidence interval includes 1 NOT) or not significant (confidence interval includes 1 DO). Note this is a univariate analysis meaning that no adjustment has been made for differences in patient characteristics over time. It is also important to realize that a large proportion of patients from the episodes of the more recent periods are still hospitalized. These are included in the calculations as survivors, while a part may still die, so that the odds ratio can still rise (considerably).

| | Odds ratio (CI) |
|-------------------------|------------------------|
| Period March-April 2020 | Reference |
| Period May-June 2020 | 0.52 (0.36-0.74) |
| Period July-August 2020 | 0.72 (0.47-1.09) |
| Period Sept-Oct 2020 | 1.11 (0.96-1.27) |
| Period Nov-Dec 2020 | 1.09 (0.97-1.23) |
| Period Jan-Feb 2021 | 0.87 (0.77-0.99) |
| Period March-April 2021 | 0.76 (0.68-0.85) |
| Period May-June 2021 | 0.57 (0.48-0.67) |
| July-August 2021 | 0.54 (0.44-0.66) |
| Period Sept-Oct 2021 | 0.68 (0.56-0.82) |

COVID-19 and SOFA

For this report, the data of the COVID-19 episodes are also linked to the information about organ failure that is supplied to NICE in the Sequential Organ Failure Assessment (SOFA) registration module. About half of the ICUs in the Netherlands register this SOFA data. In the table below, in addition to the number of COVID-19 episodes that could be linked to the clinical information, the number of COVID-19 episodes that could be linked to the SOFA data is shown.

| | Number of COVID-19 episodes |
|-------------------------------------|------------------------------------|
| Linked to clinical (MDS) data | 13134 |
| Linked to organ failure (SOFA) data | 6757 |

The table below shows in how many COVID-19 episodes and how many SARI patients received treatment with different types of organ support. For the patients receiving the particular organ support it is also shown how many calendar days they received this support on average during the ICU admission. Finally, the average number of calendar days on which the measured platelet was <50 is shown.

| | COVID-19 episodes N (%) | Mean number of days (SE) | SARI patients N (%) | Mean number of days (SE) |
|---|------------------------------------|---|------------------------------------|---|
| Basic respiratory support | 4950 (73.3) | 10.6 (11.9) | 5126 (59.1) | 6.5 (8.5) |
| Advanced respiratory support | 32 (0.5) | 4.4 (8.8) | 169 (1.9) | 3.7 (6.7) |
| Artificial liver support | 1 (0) | 1 (-) | 0 (0) | - |
| Cardiac support using cardiac assist device | 22 (0.3) | 8.8 (16.9) | 57 (0.7) | 10.4 (14.3) |
| Renal support using renal replacement therapy | 543 (8) | 10.6 (10.7) | 565 (6.5) | 8.1 (9.4) |
| Measured platelets value <50 | 278 (4.1) | 2.6 (3.8) | 512 (5.9) | 4.8 (5.6) |